



GMT MONTHLY MEMBERSHIP PROGRESS REPORT

Results as of: 5/31/2024

Multiple District 321

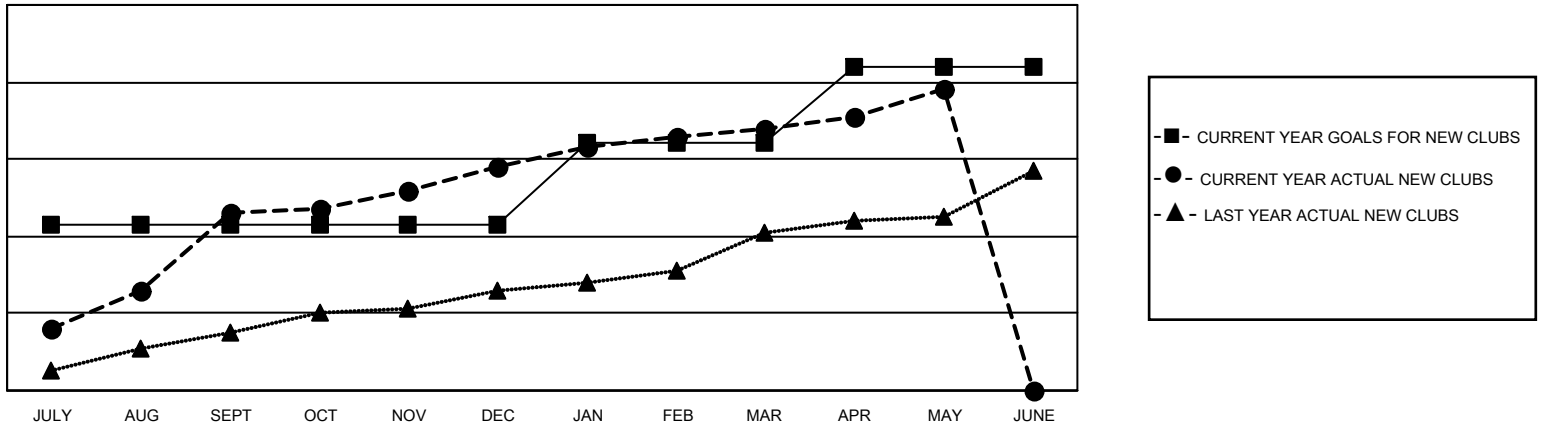
LOCATION: INDIA

GMT: OPEN

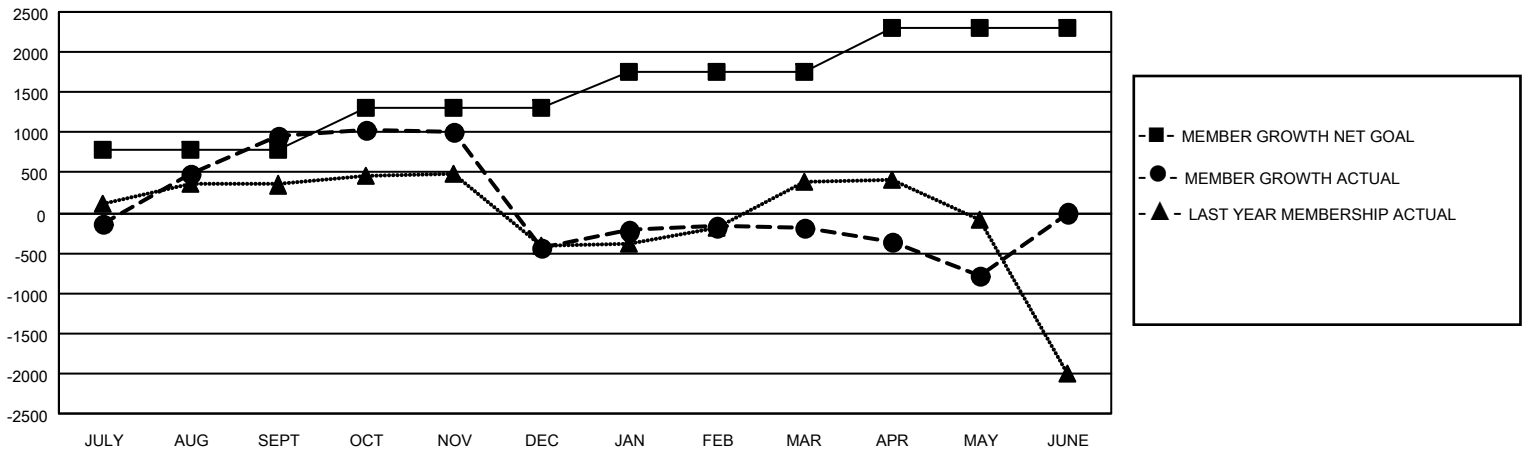
GMT CA 6 - I

Clubs				Members			
RESULTS FOR 2023-2024				RESULTS FOR 2023-2024			
QUARTER	NEW CLUB GOAL	NEW CLUBS	DROPPED CLUBS	QUARTER	MEMBER GROWTH NET GOAL	MEMBER GROWTH ACTUAL	DROPPED MEMBERS ACTUAL (including transfers)
JULY/AUG/SEPT	43	46	9	JULY/AUG/SEPT	790	2,914	1,565
OCT/NOV/DEC	0	12	32	OCT/NOV/DEC	515	1,227	2,484
JAN/FEB/MAR	21	10	12	JAN/FEB/MAR	442	1,083	643
APR/MAY/JUNE	20	10	4	APR/MAY/JUNE	545	790	1,304

GOALS AND ACTUAL NEW CLUBS CUMULATIVE



GOALS AND ACTUAL MEMBERS CUMULATIVE



DROPPED CLUBS: 57	683 CLUBS OF 1210 ADDED 1 OR MORE NEW MEMBERS	GENDER DISTRIBUTION MALE 21,953 (70.82%) FEMALE 9,044 (29.18%)
DROPPED MEMBERS DECEASED 106 CLUB CANCELLED 794 OTHER 5,088 TOTAL 5,988	CLICK HERE FOR CUMULATIVE MEMBERSHIP DATA	TOTAL FAMILY UNIT MEMBERS 15,116 FAMILY MEMBERS PAYING HALF DUES 8,985